

clarity by design



AUDIO PRODUCTS

Handcrafted in Great Britain





HERITAGE SERIES

...hear the difference<sup>©</sup>

**LS5/9**

## **LS5/9**

The Graham Audio BBC Licensed LS5/9

Of all the designers in the UK today Derek Hughes was best placed to understand and reinvent the original design under license from the BBC to their very exacting specifications and testing criteria. True to the original concept with some carefully considered cosmetic and practical alterations, the new Graham Audio LS5/9 loudspeaker greatly enhances any professional level high fidelity system, providing accurate, transparent audio reproduction with exceptional build quality.

The tweeter is the latest version of the 34mm soft dome unit from French manufacturer Audax that was originally specified by the BBC. All examples are tested and characterised before being matched to the crossover. The bass driver was developed by the highly respected UK drive unit manufacturer Volt, who with their tremendous experience and knowledge built upon the essence of the original BBC design. The bespoke crossover and equalisation network is also built at the Volt facility. The thin wall construction Birch cabinets are internally damped using medium density Rockwool slabs, retained by a cloth lining applied by our own upholsterer to the original BBC specification.

The LS5/9 is part of Graham Audio's Heritage Series of speakers, drawn from the legacy and excellence of the BBC's many years in furthering the standards of broadcasting.

**clarity by design**

 **Graham**  
AUDIO PRODUCTS



HERITAGE SERIES

...hear the difference<sup>©</sup>

**LS5/8**

## LS5/8

BBC LICENSED LS5/8 Grade One monitor speaker.

Designed in conjunction with Derek Hughes and Volt loudspeakers the high resolution two way passive loudspeaker features a bespoke 12 inch bass/mid unit and legendary Audax tweeter matched to a handcrafted crossover, constructed by Derek Hughes to exacting standards.

The project was conceived to reintroduce the famous BBC design as part of the Heritage Series spearheaded by the Graham Audio LS5/9 monitor speaker that has received such worldwide acclaim.

The design principle was to maintain the high class midrange and balance of the LS5/9's but with greater extension, power handling and authority. The same continuity of sound is available between the models and engineers can swap between the two different speakers with confidence during recording and mastering.

The LS5/8 was originally issued as an 'active version' by the BBC using an in-house modified crossover card fitted to the vintage Quad 405 amplifier which bi-amped the speaker. Derek Hughes's masterful passive crossover design greatly improves on the resolution and imaging of the original speakers. The bespoke 12 inch bass unit made for Graham Audio is a custom device that perfectly matches the Audax HF unit and the tonal balance and natural sound of the speakers is greatly improved over the original design, whilst still being typically British in nature and conforming to the legacy of the demanding BBC license specifications.

**clarity by design**

 **Graham**  
AUDIO PRODUCTS





HERITAGE SERIES

...hear the difference<sup>©</sup>

**LS3/5**

**LS3/5**

**CHARTWELL**  
CHARTWELL ELECTRO ACOUSTICS LIMITED

The Best LS3/5 in the World  
...never commercially released until now!

Graham Audio are please to announce the purchase of the CHARTWELL and SWISSTONE Companies. The famous Chartwell brand were historically regarded as the finest builders of the BBC LS3/5 and their products are the most sort after of all the licensees who built these excellent speakers.

Graham Audio are now manufacturing the most famous of all the BBC speakers under one of it's most cherished names with the attention to detail and sound quality that made Chartwell so famous.

The bespoke drive units and crossover networks are by Derek Hughes working in conjunction with Volt loudspeakers to produce a fully licensed 'Made in England' speaker, using the very finest materials available.

Graham Audio's mission is to produce BBC monitors that harness advanced manufacturing techniques whilst keeping the heritage and design of the original speakers alive.

**clarity by design**

 **Graham**  
AUDIO PRODUCTS



## SYSTEM 3D

The Royal Opera House Covent Garden needed a bespoke passive speaker system of the highest quality and turned to Graham Audio for a solution. In collaboration with Derek Hughes the objective was to design a high resolution speaker system capable of being driven by any amplifier that will provide the same continuity of sound and detail as our Heritage Series BBC licensed monitors, but on a larger scale for the theatre and audio industry.

### SYSTEM 3D was born

Produced as a 4 box, SYSTEM 3D uses a separate mid top box aligned to a twin bass unit on each side. The design uses a bespoke high resolution, high powered passive crossover network that negates any digital correction or manipulation.

SYSTEM 3D simplifies the sound designers needs, providing a hi-fi quality speaker with the power and delicacy to be used on the opera house stage as well as theatre sound.

SYSTEM 3D will soon be available to domestic users, providing the ultimate reference system for studio and high end audio reproduction. Graham Audio will be offering this system in a range of hand picked, high quality, real wood veneers.

### clarity by design

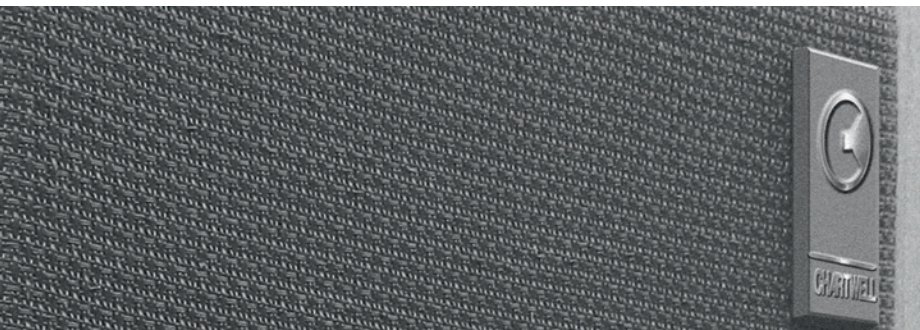
...hear the difference<sup>©</sup>

**SYSTEM<sup>©</sup>**  
**3D**  
LOUDSPEAKER SYSTEM

 **Graham**  
AUDIO PRODUCTS



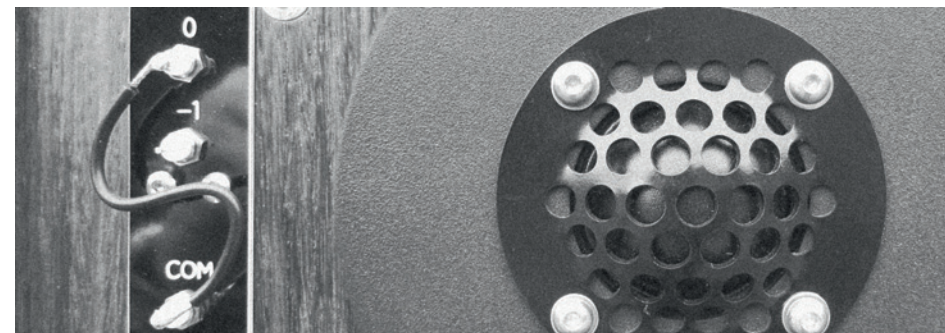
## SPECIFICATIONS



### LS3/5 Specifications

System : 2 Way Sealed Box (infinite baffle)  
Cabinet : 12mm (critically-damped) Birch plywood  
Finish : Wood Veneer  
Dimensions : 30cm (h) x 19cm (w) x 17cm (d)  
Weight : 5.3kg  
Response : 80Hz to 20kHz +/-3dB  
Nominal Impedance : 15 Ohm  
Sensitivity : 83dB/1watt/1m  
Maximum Output : 100dB, pair @2m  
Bass/Midrange : 110mm cone  
Tweeter : 25mm Mylar-dome  
Crossover : 3 kHz, 13 Precision Elements  
Recommended Amplifier Power : 50W maximum

## SPECIFICATIONS



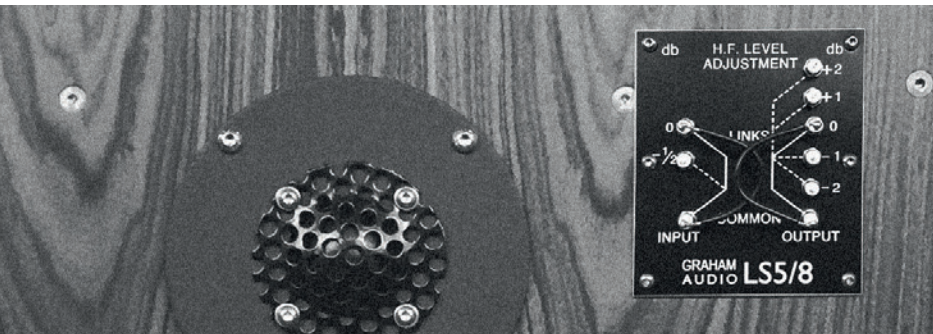
### LS5/9 Specifications

System : 2 Way Reflex  
Cabinet : Thin wall construction (critically-damped) Birch plywood  
Finish : Wood Veneer  
Dimensions : 28cm x 27.5cm x 46cm  
Weight : 14kg  
Responses : 50Hz~16kHz +/-3dB  
Nominal Impedance : 8 ohms  
Sensitivity : 87dB SPL (2.83V, 1m)  
Maximum Output : Over 100dB for a pair @ 2m  
Bass/Midrange : 200mm Diaphnatone Polypropylene  
Tweeter : Son Audax HD 13D34H  
Crossover : FL 6/36, 24 Precision Elements  
Recommended Amplifier Power : 50 to 200 watts unclipped programme

...hear the difference<sup>©</sup>

 **Graham**  
AUDIO PRODUCTS

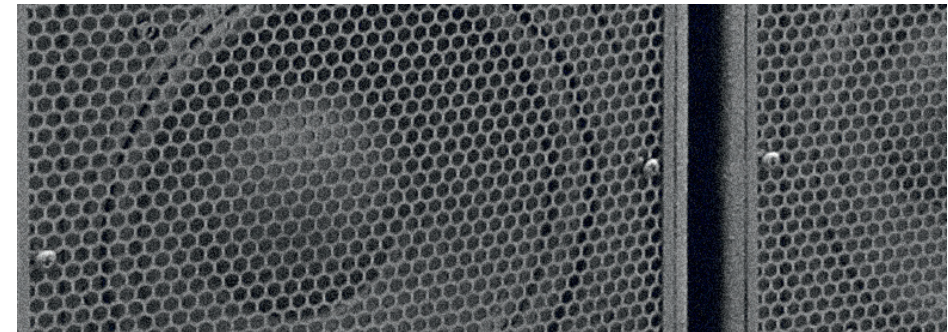
## SPECIFICATIONS



### LS5/8 Specifications

System : 2 Way Reflex  
Cabinet : Thin wall construction (critically-damped) Birch plywood  
Finish : Wood Veneer  
Dimensions : 76cm h x 46cm w x 40cm d  
Weight : 34kg  
Response : 40Hz~16kHz +/-3dB  
Nominal Impedance : 8 ohms  
Sensitivity : 89dB SPL (2.83V, 1m)  
Maximum Output : Over 110dB for a pair @ 2m  
Bass/Midrange : 300mm Diaphnatone Polypropylene  
Tweeter : Son Audax HD 13D34H  
Crossover : 1.8kHz, 19 Precision Elements  
Recommended Amplifier Power : 50 to 250 watts unclipped programme

## SPECIFICATIONS



### SYSTEM 3D Specifications

System : 5 Way Reflex  
Cabinet : Birch plywood  
Finish : Black texture  
Dimensions : 164cm h x 33cm w x 38cm d  
Weight : Tops 38.4kg Bottoms 45.2kg  
Response : 36Hz~18kHz +/-3dB  
Nominal Impedance : 8 ohms  
Sensitivity : 91dB SPL (2.83V, 1m)  
Maximum Output : 120dB for a pair @ 2m  
Bass : 250mm  
Midrange : 75mm dome  
Tweeter : 38mm soft dome  
Crossover : 180Hz, 1kHz, 4kHz,  
Recommended Amplifier Power : 200 to 1000 watts unclipped programme

...hear the difference<sup>©</sup>

 **Graham**  
AUDIO PRODUCTS





**Graham**  
**AUDIO**

ENGLISH HIGH FIDELITY

**Handcrafted in Great Britain**

Graham Audio  
Ringslade House, Ringslade Road  
Highweek, Newton Abbot  
Devon TQ12 6PT  
United Kingdom

Tel: +44 (0)1626 361 168  
email: [grahamaudiouk@gmail.com](mailto:grahamaudiouk@gmail.com)

**[www.grahamaudio.co.uk](http://www.grahamaudio.co.uk)**

**...hear the difference<sup>©</sup>**

